

# PIERMONT 29 MK2

4	2	2
BEDROOMS	BATHROOMS	GARAGE

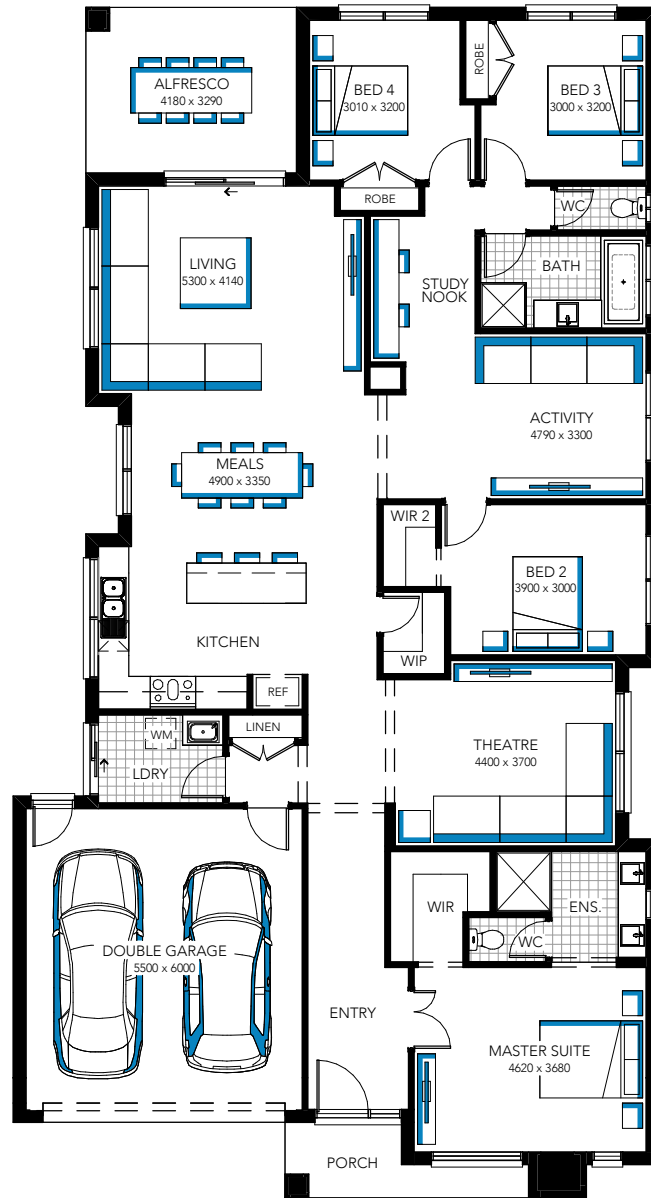
---

---



# PIERMONT 29 MK2

4 | 2 | 2  
 BEDROOMS | BATHROOMS | GARAGE



## PIERMONT 29 MK2

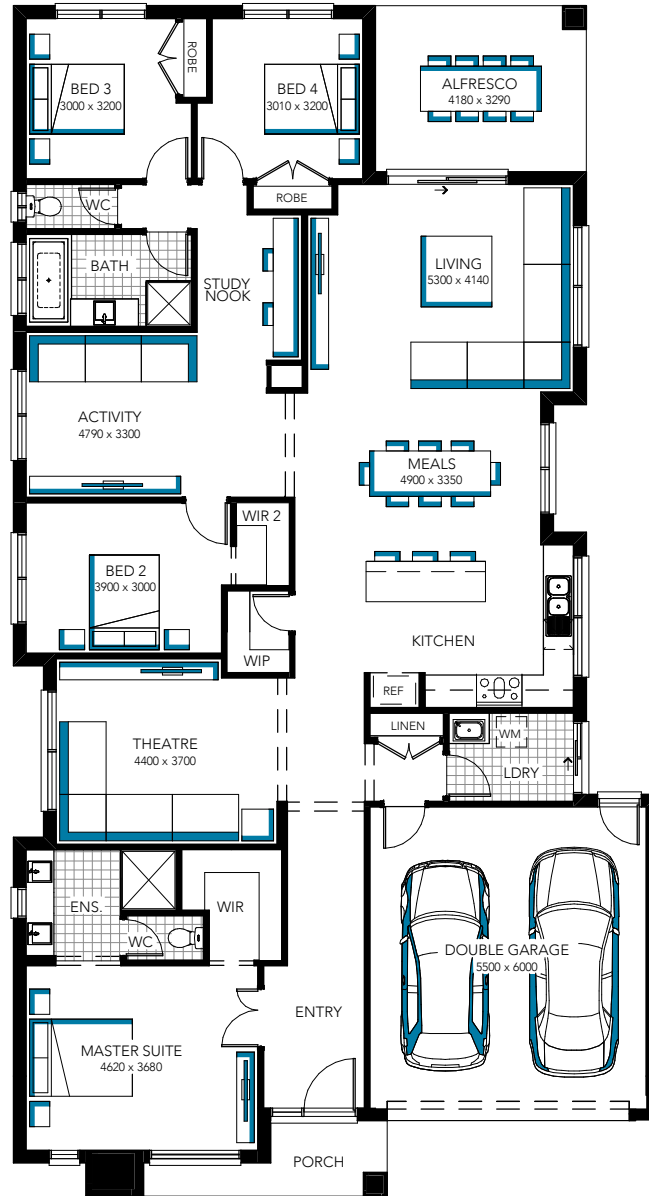
MINIMUM BLOCK WIDTH	STANDARD DESIGNED TO SUIT (m)	EXTERIOR LENGTH	EXTERIOR WIDTH	HOUSE AREA TOTAL	SQUARES
14.0	14.00 x 32.00	23.61	12.80	266.97	28.74

Minimum lot sizes & dimensions may vary subject to fall of land, easement details, council & developer requirements. House size and dimensions on brochure based on LISMORE 2 facade. Sizes and dimensions may vary subject to facade election. Refer to working drawings for complete dimensions.

This work is owned by Carlsle Homes and provided under licence exclusively to Essential Building Solutions PTY LTD and cannot be reproduced or copied, either wholly or in part, in any form (Graphic, Electronic, including photocopying) without the permission of Carlsle Homes PTY LTD. Copyright 2019

# PIERMONT 29 MK2

4 | 2 | 2  
 BEDROOMS | BATHROOMS | GARAGE



## PIERMONT 29 MK2

MINIMUM BLOCK WIDTH	STANDARD DESIGNED TO SUIT (m)	EXTERIOR LENGTH	EXTERIOR WIDTH	HOUSE AREA TOTAL	SQUARES
14.0	14.00 x 32.00	23.61	12.80	266.97	28.74

Minimum lot sizes & dimensions may vary subject to fall of land, easement details, council & developer requirements. House size and dimensions on brochure based on LISMORE 2 facade. Sizes and dimensions may vary subject to facade election. Refer to working drawings for complete dimensions.

This work is owned by Carlsle Homes and provided under licence exclusively to Essential Building Solutions PTY LTD and cannot be reproduced or copied, either wholly or in part, in any form (Graphic, Electronic, including photocopying) without the permission of Carlsle Homes PTY LTD. Copyright 2019